



CHRIST THE KING ENGINEERING COLLEGE

Karamadai, Coimbatore - 641104

(Approved by AICTE, New Delhi & Affiliated to Anna University, Chennai)

Ph: +91 91500 76729

Email: principal@ckec.ac.in

Web: www.ckec.ac.in

STUDENTS FEEDBACK ANALYSIS REPORT

ACADEMIC YEAR: 2022 – 23

REPORT DATE: 06.03.2023

Feedback from Students

Survey Count : 601

| S.No | Feedback Question's | Very | | | | | Total Weightage | Percentage | 3-Scale Weightage |
|------|---|-----------|------|------|------|------|-----------------|------------|-------------------|
| | | Excellent | Good | Good | Fair | Poor | | | |
| 1 | Teachers cover the syllabus with clear explanations on all topics and helping the students to improve their performance | 218 | 133 | 229 | 16 | 5 | 2346 | 78.07% | 2.34 |
| 2 | Teachers clarify students' doubts and take remedial measures for diversified capacity students | 154 | 191 | 236 | 13 | 7 | 2275 | 75.71% | 2.27 |
| 3 | Teachers organize and facilitate students to participate in guest lecturers/ seminars/ workshops/ internships/ field visits/ projects at Industries on a regular basis. | 114 | 116 | 286 | 81 | 4 | 2058 | 68.49% | 2.05 |



M. Jeyakumar
06/03/23
Dr. M. JEYAKUMAR, M.E., Ph.D.
PRINCIPAL
CHRIST THE KING ENGINEERING COLLEGE,
Chikkampalayam Village,
Karamadai, Mettupalayam Taluk,
Coimbatore - 641 104,



CHRIST THE KING ENGINEERING COLLEGE

Karamadai, Coimbatore - 641104

(Approved by AICTE, New Delhi & Affiliated to Anna University, Chennai)

Ph: +91 91500 76729

Email: principal@ckec.ac.in

Web: www.ckec.ac.in

| S.No | Feedback Question's | Very | | | | | Total Weightage | Percentage | 3-Scale Weightage |
|------|--|-----------|------|------|------|------|-----------------|------------|-------------------|
| | | Excellent | Good | Good | Fair | Poor | | | |
| 4 | Teachers mentor students on regular basis to improve their academic performance and motivate them to participate in co-curricular and extra-curricular activities. | 109 | 110 | 289 | 91 | 2 | 2036 | 67.75% | 2.03 |
| 5 | Laboratory experiments enable experiential learning to understand concepts. | 158 | 168 | 238 | 29 | 8 | 2242 | 74.61% | 2.24 |
| 6 | Internal tests and end-semester examinations are periodically conducted towards students' continuous evaluation and follow-up actions taken based on evaluation. | 169 | 186 | 227 | 11 | 8 | 2300 | 76.54% | 2.30 |
| 7 | Students' results and attendance records are transparent and communicated to students and parents through electronic communication. | 161 | 165 | 258 | 12 | 5 | 2268 | 75.47% | 2.26 |



M. Jeyakumar
Dr. M. JEYAKUMAR, M.E., Ph.D.
 PRINCIPAL
 CHRIST THE KING ENGINEERING COLLEGE,
 Chikkarampalayam Village,
 Karamadai, Mettupalayam Taluk,
 Coimbatore - 641 104.



CHRIST THE KING ENGINEERING COLLEGE

Karamadai, Coimbatore - 641104

(Approved by AICTE, New Delhi & Affiliated to Anna University, Chennai)

Ph: +91 91500 76729

Email: principal@ckec.ac.in

Web: www.ckec.ac.in

| S.No | Feedback Question's | Very | | | | | Total Weightage | Percentage | 3-Scale Weightage |
|------|--|-----------|------|------|------|------|-----------------|------------|-------------------|
| | | Excellent | Good | Good | Fair | Poor | | | |
| 8 | Value-added programs are useful to strengthen technical knowledge and skills which in turn helps towards employability | 104 | 125 | 284 | 85 | 3 | 2045 | 68.05% | 2.04 |
| 9 | Teachers practice Outcome Based Education and achieve Course and Program outcomes toward students' knowledge, skills and attitude. | 168 | 166 | 240 | 20 | 7 | 2271 | 75.57% | 2.27 |
| 10 | Equipment and Computers are adequate and meet students' requirements. | 141 | 181 | 250 | 21 | 8 | 2229 | 74.18% | 2.23 |
| 11 | Library ambience is good and facilitates self-learning. | 136 | 194 | 240 | 22 | 9 | 2229 | 74.18% | 2.23 |
| 12 | Library is having good number of text and reference books and additional books for competitive exams. | 138 | 189 | 243 | 23 | 8 | 2229 | 74.18% | 2.23 |



Dr. M. Jeyakumar
DR. M. JEYAKUMAR, M.E., P.B.
 PRINCIPAL
 CHRIST THE KING ENGINEERING COLLEGE,
 Chikkampalayam Village,
 Karamadai, Moolanayakan Taluk,
 Coimbatore - 641 104.



CHRIST THE KING ENGINEERING COLLEGE

Karamadai, Coimbatore - 641104

(Approved by AICTE, New Delhi & Affiliated to Anna University, Chennai)

Ph: +91 91500 76729

Email: principal@ckec.ac.in

Web: www.ckec.ac.in

| S.No | Feedback Question's | | | | | | Total | | 3-Scale Weightage |
|------|---|-----------|-----------|------|------|------|-----------|------------|-------------------|
| | | Excellent | Very Good | Good | Fair | Poor | Weightage | Percentage | |
| 13 | Digital Library has enough resources like virtual lab, eBooks, e-Journals and Database which enhances ICT learning. | 142 | 169 | 251 | 29 | 10 | 2207 | 73.44% | 2.20 |
| 14 | Highspeed Internet facilities are available in the Campus. | 146 | 160 | 234 | 44 | 17 | 2177 | 72.45% | 2.17 |
| 15 | Co-Curricular and Extra-Curricular (sports & games) facilities give good opportunities to explore themselves. | 156 | 162 | 231 | 33 | 19 | 2206 | 73.41% | 2.20 |
| 16 | Hostel, Mess, and Canteen are hygienic and adequate. | 138 | 151 | 257 | 37 | 18 | 2157 | 71.78% | 2.15 |
| 17 | Quality, Clean drinking water is available. | 133 | 172 | 249 | 35 | 12 | 2162 | 72.61% | 2.18 |
| 18 | Toilets/Washrooms are hygienic and well-maintained. | 125 | 170 | 269 | 24 | 13 | 2173 | 72.31% | 2.17 |
| 19 | The buildings and Class Rooms enable the proper locomotion and seating for differently-abled. | 135 | 170 | 272 | 17 | 7 | 2212 | 73.61% | 2.21 |



M. J. J. J.
Dr. MJEVAKUMAR, M.E., Ph.D.
 PRINCIPAL
 CHRIST THE KING ENGINEERING COLLEGE,
 Chikkarampalayam Village,
 Karamadai, Mettupalayam Taluk,
 Coimbatore - 641 104.



CHRIST THE KING ENGINEERING COLLEGE

Karamadai, Coimbatore - 641104

(Approved by AICTE, New Delhi & Affiliated to Anna University, Chennai)

Ph: +91 91500 76729

Email: principal@ckec.ac.in

Web: www.ckec.ac.in

| S.No | Feedback Question's | Very | | | | | Total Weightage | Percentage | 3-Scale Weightage |
|----------------------------|--|-----------|------|------|------|------|-----------------|---------------|-------------------|
| | | Excellent | Good | Good | Fair | Poor | | | |
| 20 | Well maintained Gym and Yoga Centers are available | 97 | 102 | 295 | 94 | 13 | 1979 | 65.86% | 1.98 |
| 21 | The institute has good transport facilities and proximity to public transport | 148 | 177 | 248 | 18 | 10 | 2238 | 74.48% | 2.23 |
| 22 | The campus is clean and green campus; Plastic-free zone and eco-friendly campus (Sewage and alternate power supply). | 145 | 191 | 225 | 32 | 8 | 2236 | 74.41% | 2.23 |
| OVER ALL PERCENTAGE | | | | | | | 2,195.23 | 73.05% | 2.19 |

Authorized Signature



Authorized Person

MJE
6/3/23
Dr.MJEVAKUMAR, M.E.,Ph.D
PRINCIPAL
CHRIST THE KING ENGINEERING COLLEGE,
Chikkankannanpalya- Village,
Karamadai, Mettur Taluk,
Coimbatore - 641 104.



CHRIST THE KING ENGINEERING COLLEGE

Karamadai, Coimbatore - 641104

(Approved by AICTE, New Delhi & Affiliated to Anna University, Chennai)

Ph: +91 91500 76729

Email: principal@ckec.ac.in

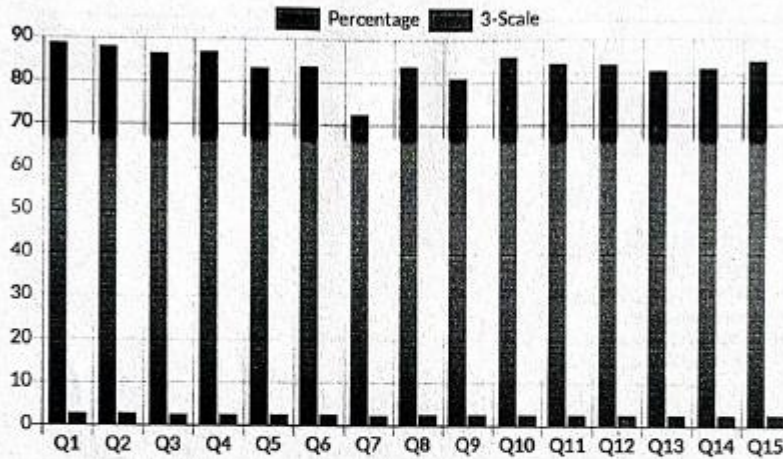
Web: www.ckec.ac.in

ACADEMIC YEAR 2022-23

TOTAL RESPONSES:601

DATE:06.03.2023

STUDENTS FEEDBACK ANALYSIS REPORT - CHART




Dr. M. JEYAKUMAR, M.E., Ph.D
PRINCIPAL
CHRIST THE KING ENGINEERING COLLEGE,
Chikkarampalayam Village,
Karamadai, Mettupalayam Taluk,
Coimbatore - 641 104.





CHRIST THE KING ENGINEERING COLLEGE

Karamadai, Coimbatore - 641104

(Approved by AICTE, New Delhi & Affiliated to Anna University, Chennai)

Ph: +91 91500 76729

Email: principal@ckec.ac.in

Web: www.ckec.ac.in

| S.NO | SUGGESTIONS |
|------|---|
| 1 | Internship arrangement is needed |
| 2 | Need more Value-Added Courses |
| 3 | More co-curricular and extra-curricular activities are required |
| 4 | Need to increase the yoga and Gym activities |




Dr. M. Jeyakumar, M.E., Ph.D.
PRINCIPAL
CHRIST THE KING ENGINEERING COLLEGE,
Chikkarsampalayam Village,
Karamadai, Mettupalayam Taluk,
Coimbatore - 641 104.



CHRIST THE KING ENGINEERING COLLEGE

Karamadai, Coimbatore - 641104

(Approved by AICTE, New Delhi & Affiliated to Anna University, Chennai)

Ph: +91 91500 76729

Email: principal@ckec.ac.in

Web: www.ckec.ac.in

FACULTY FEEDBACK ANALYSIS REPORT

ACADEMIC YEAR: 2022 – 23

REPORT DATE: 06.03.2023

| S.No | Feedback Question's | Very | | | | | Total Weightage | Percentage | 3-Scale Weightage |
|------|--|-----------|------|------|------|------|-----------------|------------|-------------------|
| | | Excellent | Good | Good | Fair | Poor | | | |
| 1 | Teachers monitor the complete academic performance of students and adopt teaching methodologies that suit different learners (Auditory, Visual and Kinesthetic). | 25 | 12 | 6 | 0 | 0 | 191 | 88.84% | 2.67 |
| 2 | Teachers are facilitated with Laptops, LCD Projectors, Smart Boards, and WIFI to enhance the ICT teaching-learning method and flipped classrooms. | 24 | 13 | 5 | 1 | 0 | 189 | 87.91% | 2.64 |



Handwritten Signature
Dr.M.JEYAKUMAR, M.E., Ph.D.
PRINCIPAL
CHRIST THE KING ENGINEERING COLLEGE,
Chikkarsanmoleyan Village,
Karamadai, Morthunpalayam Taluk,
Coimbatore - 641 104.



CHRIST THE KING ENGINEERING COLLEGE

Karamadai, Coimbatore - 641104

(Approved by AICTE, New Delhi & Affiliated to Anna University, Chennai)

Ph: +91 91500 76729

Email: principal@ckec.ac.in

Web: www.ckec.ac.in

| S.No | Feedback Question's | Very | | | | | Total Weightage | Percentage | 3-Scale Weightage |
|------|---|-----------|------|------|------|------|-----------------|------------|-------------------|
| | | Excellent | Good | Good | Fair | Poor | | | |
| 3 | Teachers blend additional certification and skill development programs in syllabus and facilitate new learning skills for employability and enhance life-long learning. | 25 | 9 | 7 | 2 | 0 | 186 | 86.51% | 2.60 |
| 4 | Teachers mentor students on regular basis in academic and overall development | 23 | 14 | 4 | 2 | 0 | 187 | 86.98% | 2.61 |
| 5 | Education shaped the personality of students in terms of values, ethics, and attitudes. | 16 | 20 | 5 | 2 | 0 | 179 | 83.26% | 2.50 |
| 6 | Institute has enabled on-line information sharing systems (along with social media) which provide up-to-date information to students, parents, and faculty | 20 | 15 | 5 | 2 | 1 | 180 | 83.72% | 2.51 |




 Dr. M. JEYAKUMAR, M.E., Ph.D.
 PRINCIPAL
 CHRIST THE KING ENGINEERING COLLEGE,
 Chikkarasipalayam Village,
 Karamadai, Mettupalayam Taluk,
 Coimbatore - 641 104.



CHRIST THE KING ENGINEERING COLLEGE

Karamadai, Coimbatore - 641104

(Approved by AICTE, New Delhi & Affiliated to Anna University, Chennai)

Ph: +91 91500 76729

Email: principal@ckec.ac.in

Web: www.ckec.ac.in

| S.No | Feedback Question's | Very | | | | | Total Weightage | Percentage | 3-Scale Weightage |
|------|--|-----------|------|------|------|------|-----------------|------------|-------------------|
| | | Excellent | Good | Good | Fair | Poor | | | |
| 7 | Institute promotes sponsored research, research publications, consultancy, faculty developments, patents etc., through faculty motivation and financial support. | 11 | 12 | 14 | 5 | 1 | 156 | 72.56% | 2.18 |
| 8 | Classrooms and Laboratory ambience are good for effective instructional delivery and practice. | 17 | 17 | 9 | 0 | 0 | 180 | 83.72% | 2.51 |
| 9 | Library facilities are good with number of books stacked, eBooks, e-Journals etc., for self-learning and research. | 15 | 16 | 11 | 1 | 0 | 174 | 80.93% | 2.43 |
| 10 | The initiatives of research promotional policy helped in nurturing natural talents and achieving accolades. | 22 | 12 | 9 | 0 | 0 | 185 | 86.05% | 2.58 |



(Signature)
Dr.M.JEYAKUMAR, M.P., Ph.D.
 PRINCIPAL
 CHRIST THE KING ENGINEERING COLLEGE,
 Chikkarambadyarai village,
 Karamadai, MetturTaluk,
 Coimbatore - 641 104.



CHRIST THE KING ENGINEERING COLLEGE

Karamadai, Coimbatore - 641104

(Approved by AICTE, New Delhi & Affiliated to Anna University, Chennai)

Ph: +91 91500 76729

Email: principal@ckec.ac.in

Web: www.ckec.ac.in

| S.No | Feedback Question's | Very | | | | | Total Weightage | Percentage | 3-Scale Weightage |
|------|---|-----------|------|------|------|------|-----------------|------------|-------------------|
| | | Excellent | Good | Good | Fair | Poor | | | |
| 11 | Sports, Games and Gym facilities helped in maintaining good physique and mental wellbeing. | 20 | 13 | 10 | 0 | 0 | 182 | 84.65% | 2.54 |
| 12 | Canteen, Mess, Dining and Hostel Facilities are good enough to support student community. | 19 | 15 | 8 | 1 | 0 | 181 | 84.19% | 2.53 |
| 13 | Campus environment creates avenue for industry institute, faculty students and along all stake-holders (Parents, Employers, CEO, and Alumni). | 15 | 19 | 9 | 0 | 0 | 178 | 82.79% | 2.48 |
| 14 | Inclusive infrastructure meeting the needs of differently-abled students. | 19 | 14 | 9 | 0 | 1 | 179 | 83.26% | 2.50 |



Dr. M. JEYAKUMAR, M.E., Ph.D.
 PRINCIPAL
 CHRIST THE KING ENGINEERING COLLEGE,
 Chikabhirupalayam Village,
 Karamadai, Mertupallyam Taluk,
 Coimbatore - 641 104.



CHRIST THE KING ENGINEERING COLLEGE

Karamadai, Coimbatore - 641104

(Approved by AICTE, New Delhi & Affiliated to Anna University, Chennai)

Ph: +91 91500 76729

Email: principal@ckec.ac.in

Web: www.ckec.ac.in

| S.No | Feedback Question's | Very | | | | | Total Weightage | Percentage | 3-Scale Weightage |
|---------------------|--|-----------|------|------|------|------|-----------------|------------|-------------------|
| | | Excellent | Good | Good | Fair | Poor | | | |
| 15 | Clean and Green campus; Plastic-free and eco-friendly campus | 17 | 20 | 6 | 0 | 0 | 183 | 85.12% | 2.55 |
| OVER ALL PERCENTAGE | | | | | | | 180.67 | 84.03% | 2.52 |

Authorized Signature



Authorized Person


Dr. M. JEYAKUMAR, M.E., Ph.D.
PRINCIPAL
CHRIST THE KING ENGINEERING COLLEGE,
Chikkarambakkam Village,
Karamadai, Mettur Taluk,
Coimbatore - 641 104.



CHRIST THE KING ENGINEERING COLLEGE

Karamadai, Coimbatore - 641104

(Approved by AICTE, New Delhi & Affiliated to Anna University, Chennai)

Ph: +91 91500 76729

Email: principal@ckec.ac.in

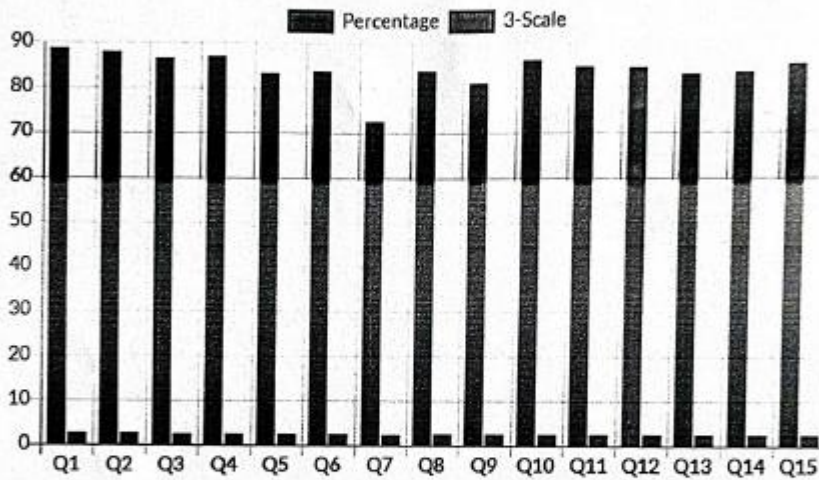
Web: www.ckec.ac.in

ACADEMIC YEAR 2022-23

TOTAL RESPONSES:43

DATE:06.03.2023

FACULTY FEEDBACK ANALYSIS REPORT - CHART



[Signature]
Dr.M.JEYAKUMAR, M.E.,Ph.D
PRINCIPAL
CHRIST THE KING ENGINEERING COLLEGE,
Chikkarampalayam Village,
Karamadai, Mettupalayam Taluk,
Coimbatore - 641 104.



CHRIST THE KING ENGINEERING COLLEGE

Karamadai, Coimbatore - 641104

(Approved by AICTE, New Delhi & Affiliated to Anna University, Chennai)

Ph: +91 91500 76729

Email: principal@ckec.ac.in

Web: www.ckec.ac.in

| S.NO | SUGGESTIONS |
|------|---|
| 1 | Need Financial support for research publications |
| 2 | Teachers must endeavor to prepare their students for the newest technology and in line with business demands. |



[Signature]
Dr.M.JEYAKUMAR, M.E.Ph.D.
PRINCIPAL
CHRIST THE KING ENGINEERING COLLEGE,
Chikkarampalayam Village,
Karamadai, Mettupalayam Taluk,
Coimbatore - 641 104.



CHRIST THE KING ENGINEERING COLLEGE

Karamadai, Coimbatore - 641104

(Approved by AICTE, New Delhi & Affiliated to Anna University, Chennai)

Ph: +91 91500 76729

Email: principal@ckec.ac.in

Web: www.ckec.ac.in

ALUMNI FEEDBACK ANALYSIS REPORT

ACADEMIC YEAR: 2022 – 23

REPORT DATE: 06.03.2023

| S.No | Feedback Question's | Excellent | Very Good | Good | Fair | Poor | Total Weightage | Percentage | 3-Scale Weightage |
|------|---|-----------|-----------|------|------|------|-----------------|------------|-------------------|
| 1 | Teachers and their mentorships helped to improve academic performance and excel in co-curricular and extracurricular activities. | 198 | 62 | 59 | 1 | 1 | 1418 | 88.35% | 2.65 |
| 2 | Teachers have adopted both Classroom teaching and ICT learning methodologies. | 129 | 123 | 69 | 0 | 0 | 1344 | 83.74% | 2.51 |
| 3 | Value-added and certification programs are incorporated in the syllabus to learn new skills for employability and life-long learning. | 136 | 97 | 86 | 0 | 2 | 1328 | 82.74% | 2.48 |
| 4 | Whether the participations in NSS/NCC/ Red-cross/YRC and in other Outreach activities inculcated social responsibilities. | 118 | 120 | 77 | 4 | 2 | 1311 | 81.68% | 2.45 |




Dr. M. JEYAKUMAR, M.E., Ph.D.
PRINCIPAL
CHRIST THE KING ENGINEERING COLLEGE,
Chikkankuppalyan Village,
Karamadai, Mettupalayam Taluk,
Coimbatore - 641 104.



CHRIST THE KING ENGINEERING COLLEGE

Karamadai, Coimbatore - 641104

(Approved by AICTE, New Delhi & Affiliated to Anna University, Chennai)

Ph: +91 91500 76729

Email: principal@ckec.ac.in

Web: www.ckec.ac.in

| S.No | Feedback Question's | Very | | | | | Total Weightage | Percentage | 3-Scale Weightage |
|------|--|-----------|------|------|------|------|-----------------|------------|-------------------|
| | | Excellent | Good | Good | Fair | Poor | | | |
| 5 | Do the Regular Academics, co-curricular and extra-curricular facilities, and ambiance shape the personality in terms of values, ethics, and attitudes? | 143 | 99 | 74 | 4 | 1 | 1342 | 83.61% | 2.51 |
| 6 | The institute provides career development, personality development, communication skills development, and employability skills development program and enables good placements and Avenues for higher studies. | 154 | 89 | 73 | 3 | 2 | 1353 | 84.30% | 2.53 |
| 7 | Class Rooms and Laboratory facilities are equipped with ICT Tools, LCD Projectors, Smart Boards, Wireless Internet etc. | 128 | 101 | 89 | 2 | 1 | 1316 | 81.99% | 2.46 |



Dr. M. Jeyakumar
Dr. M. JEVAKUMAR, M.E., Ph.D.
 PRINCIPAL
 CHRIST THE KING ENGINEERING COLLEGE,
 Chikkarampalayam Village,
 Karamadai, Mettupalayam Taluk,
 Coimbatore - 641 104.



CHRIST THE KING ENGINEERING COLLEGE

Karamadai, Coimbatore - 641104

(Approved by AICTE, New Delhi & Affiliated to Anna University, Chennai)

Ph: +91 91500 76729

Email: principal@ckec.ac.in

Web: www.ckec.ac.in

| S.No | Feedback Question's | Feedback | | | | | Total Weightage | Percentage | 3-Scale Weightage |
|------|--|-----------|-----------|------|------|------|-----------------|------------|-------------------|
| | | Excellent | Very Good | Good | Fair | Poor | | | |
| 8 | Library facilities are good with an enormous number of books, eBooks, e-Journals to promote self-learning and research behavior. | 129 | 106 | 80 | 6 | 0 | 1321 | 82.31% | 2.47 |
| 9 | The initiatives towards co-curricular activities helped in nurturing natural talents and achieving accolades. | 124 | 106 | 86 | 5 | 0 | 1312 | 81.74% | 2.45 |
| 10 | Sports, Games and Gym facilities helped in maintaining good health and in participating in inter-institutional events. | 122 | 98 | 92 | 5 | 4 | 1292 | 80.50% | 2.41 |
| 11 | Whether the Canteen facility, Hostel Mess, Dining, and Hostel Facilities are adequate and hygienic. | 125 | 94 | 98 | 2 | 2 | 1301 | 81.06% | 2.43 |



(Signature)
Dr. M. J. BYAKUMAR, M.E., Ph.D.
 PRINCIPAL
 CHRIST THE KING ENGINEERING COLLEGE,
 Chikuvampattayam Village,
 Karamadai, Mettupalayam Taluk,
 Coimbatore - 641 104.



CHRIST THE KING ENGINEERING COLLEGE

Karamadai, Coimbatore - 641104

(Approved by AICTE, New Delhi & Affiliated to Anna University, Chennai)

Ph: +91 91500 76729

Email: principal@ckec.ac.in

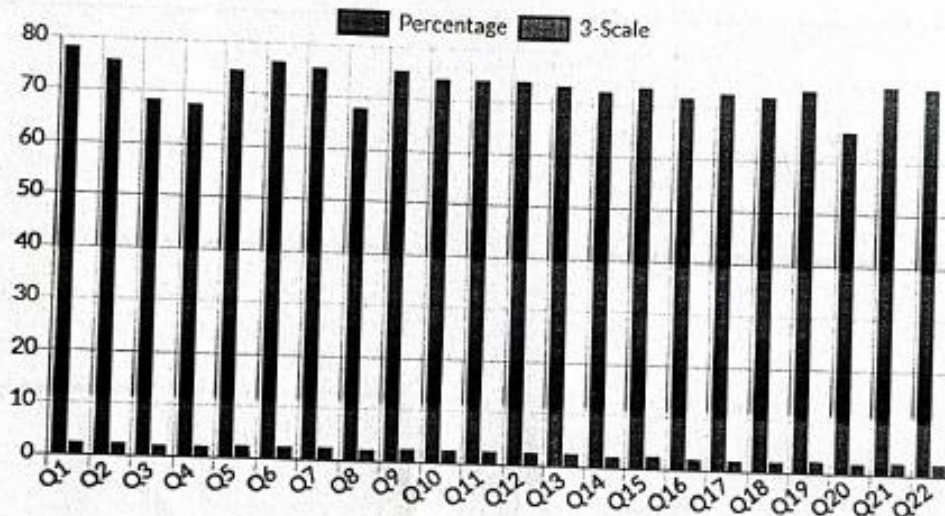
Web: www.ckec.ac.in

ACADEMIC YEAR 2022-23

TOTAL RESPONSES:321

DATE: 06.03.2023

ALUMNI FEEDBACK ANALYSIS REPORT - CHART



[Signature]
Dr. M. JEYAKUMAR, M.E., Ph.D
PRINCIPAL
CHRIST THE KING ENGINEERING COLLEGE,
Chikkarampalayam Village,
Karamadai, Mettupalayam Taluk,
Coimbatore - 641 104.



CHRIST THE KING ENGINEERING COLLEGE

Karamadai, Coimbatore - 641104

(Approved by AICTE, New Delhi & Affiliated to Anna University, Chennai)

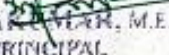
Ph: +91 91500 76729

Email: principal@ckec.ac.in

Web: www.ckec.ac.in

| S.NO | SUGGESTIONS |
|------|---|
| 1 | More NSS/NCC/ Red-cross/YRC and in other Outreach programs are required |
| 2 | Smart Boards are necessary for more effective teaching |
| 3 | Need co-curricular activities |
| 4 | Need frequent gathering of Alumni meet. |




Dr. M. JEYARAJ, M.E., P.H.D.
PRINCIPAL
CHRIST THE KING ENGINEERING COLLEGE,
Chikkarapalayam Village,
Karamadai, Mettupalayam Taluk,
Coimbatore - 641 104.



CHRIST THE KING ENGINEERING COLLEGE

Karamadai, Coimbatore - 641104

(Approved by AICTE, New Delhi & Affiliated to Anna University, Chennai)

Ph: +91 91500 76729

Email: principal@ckec.ac.in

Web: www.ckec.ac.in


EMPLOYER FEEDBACK ANALYSIS REPORT

ACADEMIC YEAR: 2022 – 23

REPORT DATE: 06.03.2023

| S.No | Feedback Question's | Very | | | | | Total Weightage | Percentage | 3-Scale Weightage |
|------|--|-----------|------|------|------|------|-----------------|------------|-------------------|
| | | Excellent | Good | Good | Fair | Poor | | | |
| 1 | The graduates of CKEC have Strong technical skills and domain expertise. | 4 | 4 | 5 | 0 | 0 | 51 | 78.46% | 2.35 |
| 2 | The graduates of CKEC have good communication and interpersonal skills. | 1 | 1 | 10 | 1 | 0 | 41 | 63.08% | 1.89 |




Dr. M. JEYAKUMAR, M.E., Ph.D.
PRINCIPAL
CHRIST THE KING ENGINEERING COLLEGE,
Chikkarathupuram Village,
Karamadai, Mullapuzha Taluk,
Coimbatore - 641 104.



CHRIST THE KING ENGINEERING COLLEGE

Karamadai, Coimbatore - 641104

(Approved by AICTE, New Delhi & Affiliated to Anna University, Chennai)

Ph: +91 91500 76729

Email: principal@ckec.ac.in

Web: www.ckec.ac.in

| S.No | Feedback Question's | Very | | | | | Total Weightage | Percentage | 3-Scale Weightage |
|------|---|-----------|------|------|------|------|-----------------|------------|-------------------|
| | | Excellent | Good | Good | Fair | Poor | | | |
| 3 | The graduates of CKEC have good aptitude and problem-solving skills. | 3 | 5 | 5 | 0 | 0 | 50 | 76.92% | 2.31 |
| 4 | The graduates of CKEC collaborate with team members and undertake multidisciplinary tasks. | 6 | 2 | 4 | 1 | 0 | 52 | 80.00% | 2.40 |
| 5 | The graduates of CKEC practice good values and ethics. | 7 | 1 | 4 | 1 | 0 | 53 | 81.54% | 2.45 |
| 6 | The graduates of CKEC have Self-learning and life-long learning capabilities. | 6 | 2 | 5 | 0 | 0 | 53 | 81.54% | 2.45 |
| 7 | The institution facilitated students' self-learning by providing certification programs and laboratory practices that help to acquire advanced knowledge and skills | 5 | 3 | 5 | 0 | 0 | 52 | 80.00% | 2.40 |




Dr. M. JEYAKUMAR, M.E., Ph.D.
 PRINCIPAL
 CHRIST THE KING ENGINEERING COLLEGE,
 Chikkankuppalayam Village,
 Karamadai, Mettupalayam Taluk,
 Coimbatore - 641 104.



CHRIST THE KING ENGINEERING COLLEGE

Karamadai, Coimbatore - 641104

(Approved by AICTE, New Delhi & Affiliated to Anna University, Chennai)

Ph: +91 91500 76729

Email: principal@ckec.ac.in

Web: www.ckec.ac.in

| S.No | Feedback Question's | Very | | | | | Total Weightage | Percentage | 3-Scale Weightage |
|----------------------------|--|-----------|------|------|------|------|-----------------|---------------|-------------------|
| | | Excellent | Good | Good | Fair | Poor | | | |
| 8 | The institution has given strong exposure to ICT tools and the latest technologies | 2 | 6 | 5 | 0 | 0 | 49 | 75.38% | 2.26 |
| 9 | The institution's ambiance facilitated students to exhibit good team spirit and leadership qualities due to their participation in co & extra-curricular activities. | 1 | 1 | 7 | 4 | 0 | 38 | 58.46% | 1.75 |
| 10 | The institution has given opportunities for students to participate in outreach activities. | 6 | 2 | 5 | 0 | 0 | 53 | 81.54% | 2.45 |
| 11 | The graduates of CKEC have Strong technical skills and domain expertise. | 7 | 1 | 5 | 0 | 0 | 54 | 83.08% | 2.49 |
| OVER ALL PERCENTAGE | | | | | | | 49.64 | 76.36% | 2.29 |

Authorized Signature



Authorized Person

Dr. M. JEVAKUMAR, M.E., Ph.D.
PRINCIPAL

CHRIST THE KING ENGINEERING COLLEGE,
Chikkampalayam Village,
Karamadai, Mettupalayam Taluk,
Coimbatore - 641 104.



CHRIST THE KING ENGINEERING COLLEGE

Karamadai, Coimbatore - 641104

(Approved by AICTE, New Delhi & Affiliated to Anna University, Chennai)

Ph: +91 91500 76729

Email: principal@ckec.ac.in

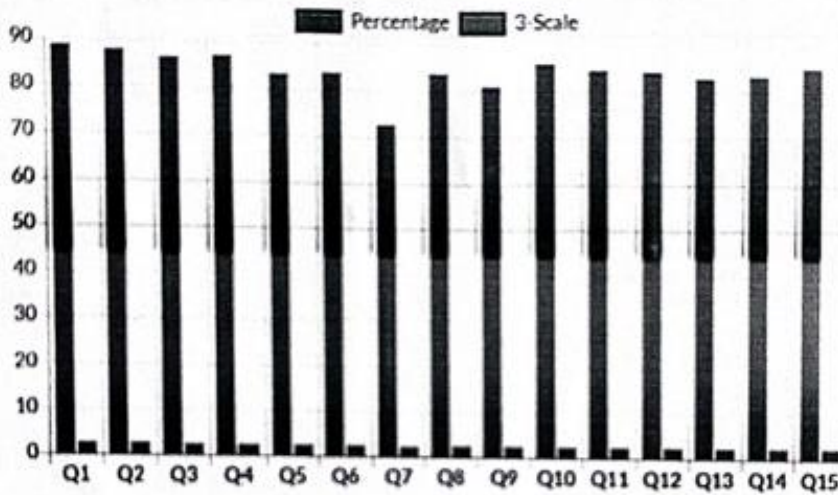
Web: www.ckec.ac.in

ACADEMIC YEAR 2022-23

TOTAL RESPONSES:13

DATE: 06.03.2023

EMPLOYERS FEEDBACK ANALYSIS REPORT - CHART



M. Jeyakumar
Dr.M.JEYAKUMAR, M.E., Ph.D
PRINCIPAL
CHRIST THE KING ENGINEERING COLLEGE,
Chikkarampatayam Village,
Karamadai, Mettupalayam Taluk,
Coimbatore - 641 104.



CHRIST THE KING ENGINEERING COLLEGE

Karamadai, Coimbatore - 641104

(Approved by AICTE, New Delhi & Affiliated to Anna University, Chennai)

Ph: +91 91500 76729

Email: principal@ckec.ac.in

Web: www.ckec.ac.in

| S.NO | SUGGESTIONS |
|------|--|
| 1 | Need to focus on Communication and Inter Personal Skills |
| 2 | Need more aptitude and problem-solving skills |
| 3 | Need to improve leadership quality |




Dr. M. JEYAKUMAR, M.E., Ph.D.
PRINCIPAL
CHRIST THE KING ENGINEERING COLLEGE,
Chikkarampalayam Village,
Karamadai, Mettupalayam Taluk,
Coimbatore - 641 104.